



CATHOLIC  
EDUCATION  
MELBOURNE

# Organisational Structure

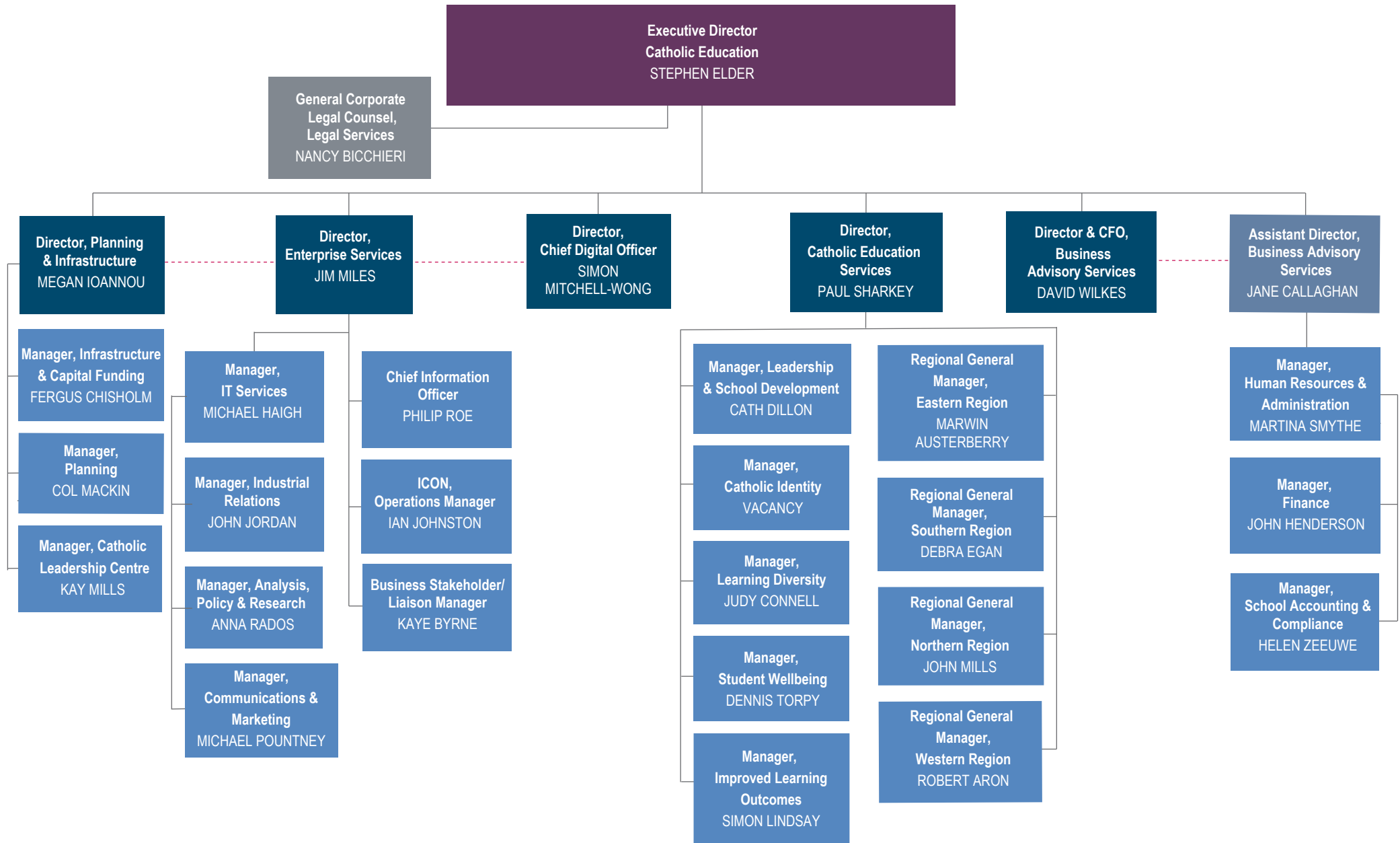
20 September 2017

# CONTENTS

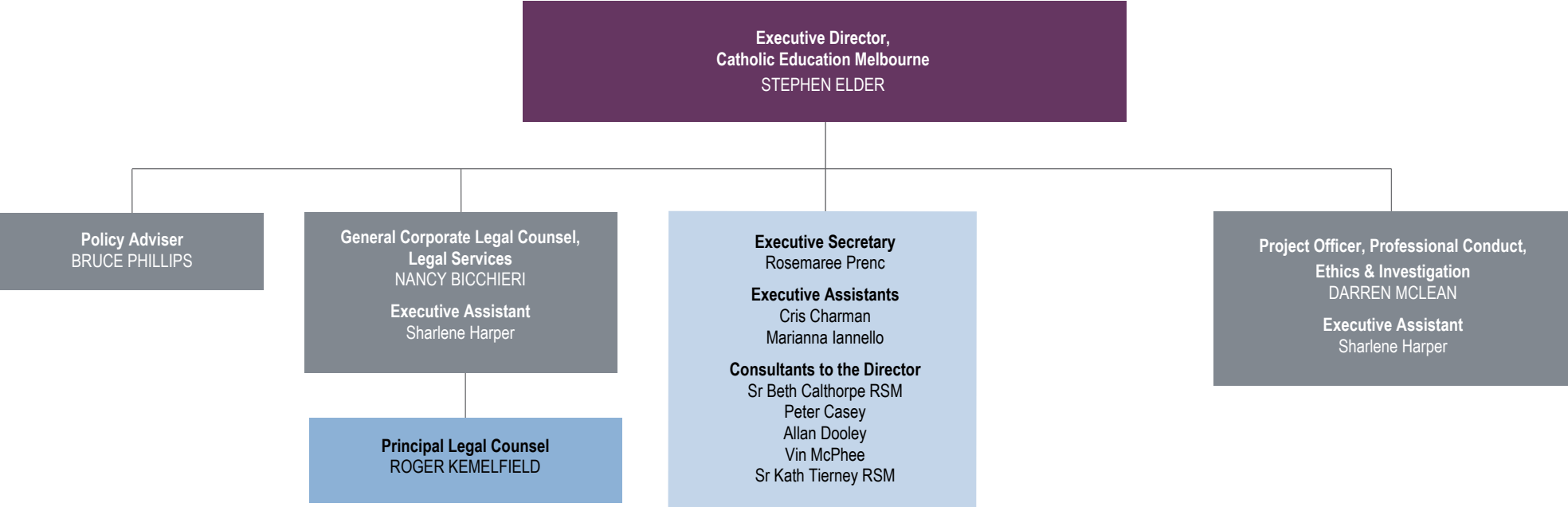
---

Senior Staff .....	3
Office of the Executive Director of Catholic Education.....	4
Catholic Education Services	
Leadership Team .....	5
Learning Diversity.....	6
Catholic Identity .....	7
Leadership & School Development .....	8
Improved Learning Outcomes.....	9
Student Wellbeing.....	10
Regional Offices.....	11
Planning & Infrastructure.....	12
Business Advisory Services.....	13
Enterprise Services	
ICON.....	14
Enterprise Content Management .....	15
IT Services & Industrial Relations.....	16
Policy, Research & Communications .....	17
Catholic Education Services – Regional Offices.....	18

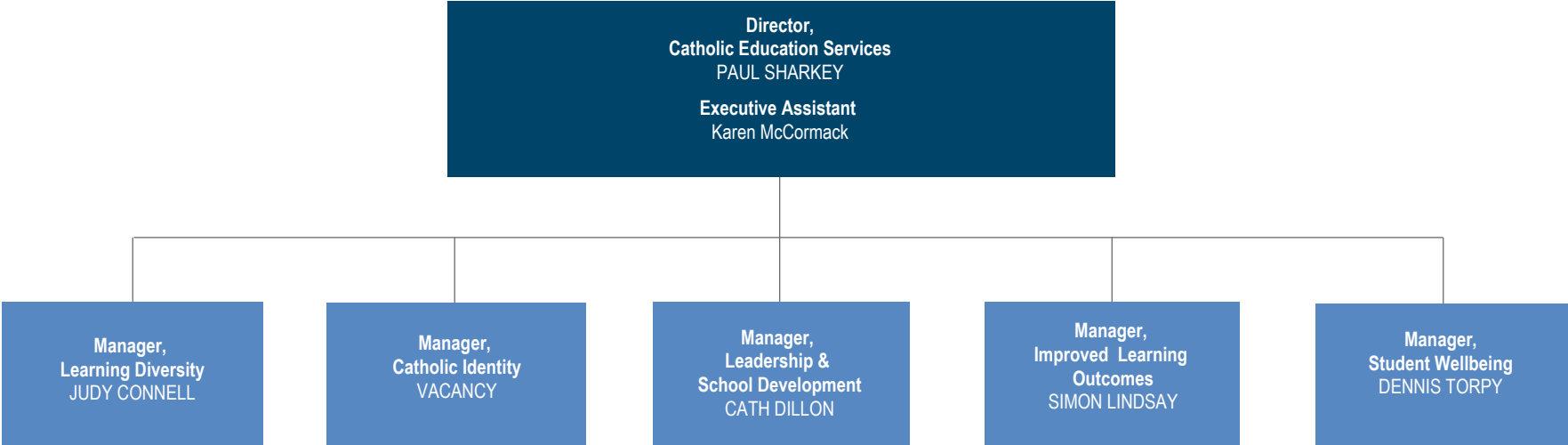
# SENIOR STAFF



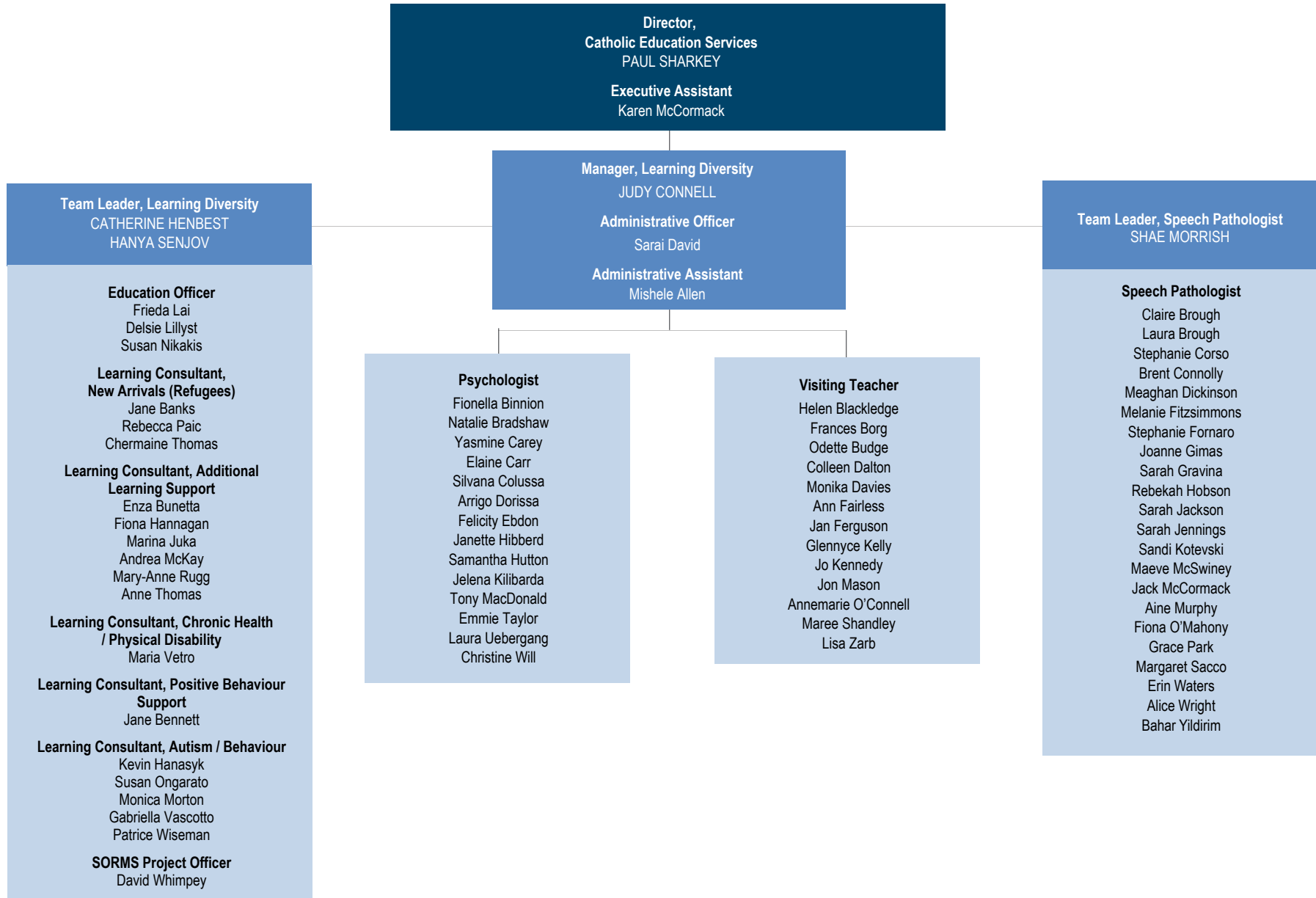
# OFFICE OF THE EXECUTIVE DIRECTOR OF CATHOLIC EDUCATION



# CATHOLIC EDUCATION SERVICES – LEADERSHIP TEAM

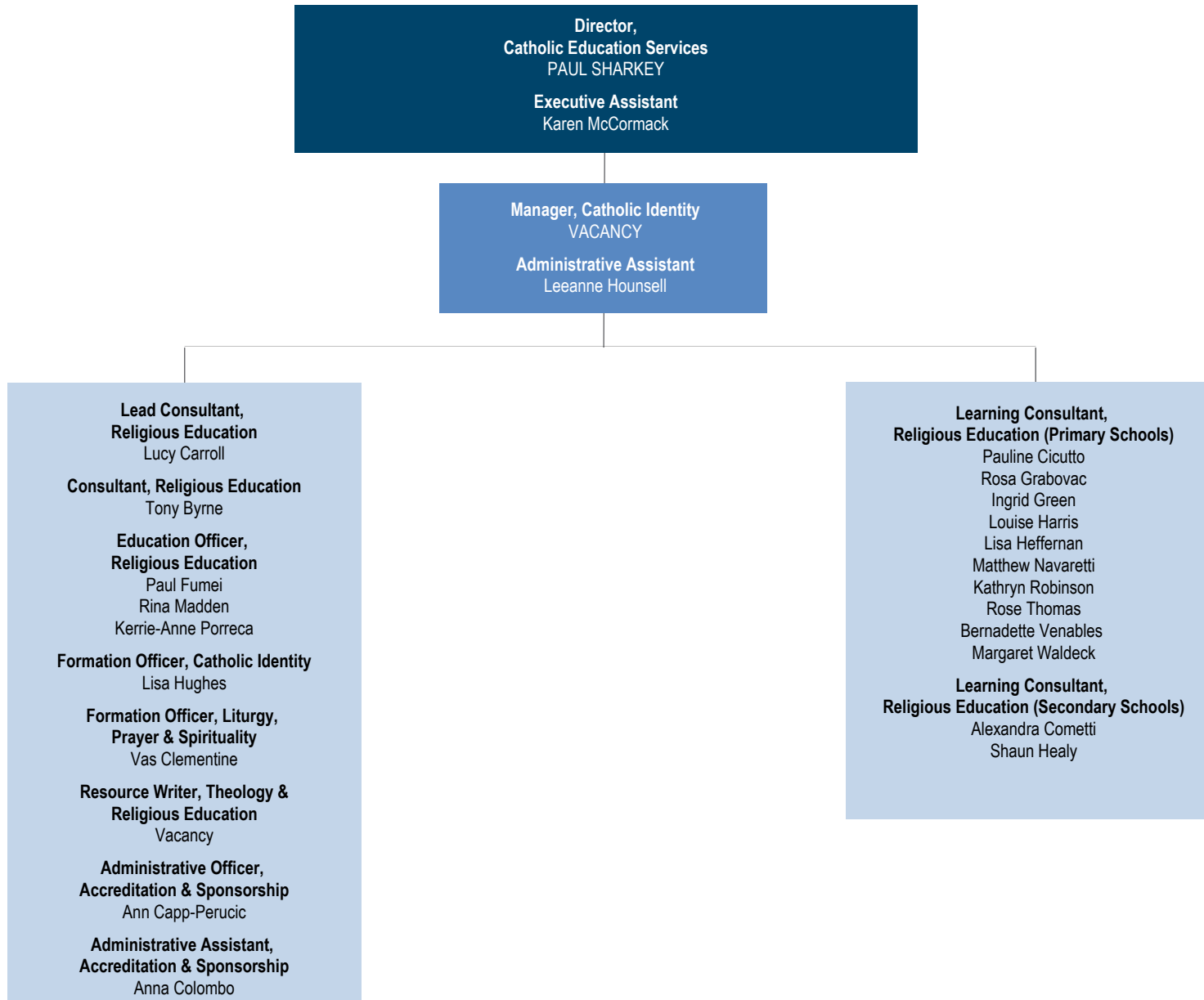


# CATHOLIC EDUCATION SERVICES – LEARNING DIVERSITY



Note: Learning Consultant, Psychologist, Tutor, Speech Pathologist and Visiting Teacher locations are detailed at the end of this document.

# CATHOLIC EDUCATION SERVICES – CATHOLIC IDENTITY



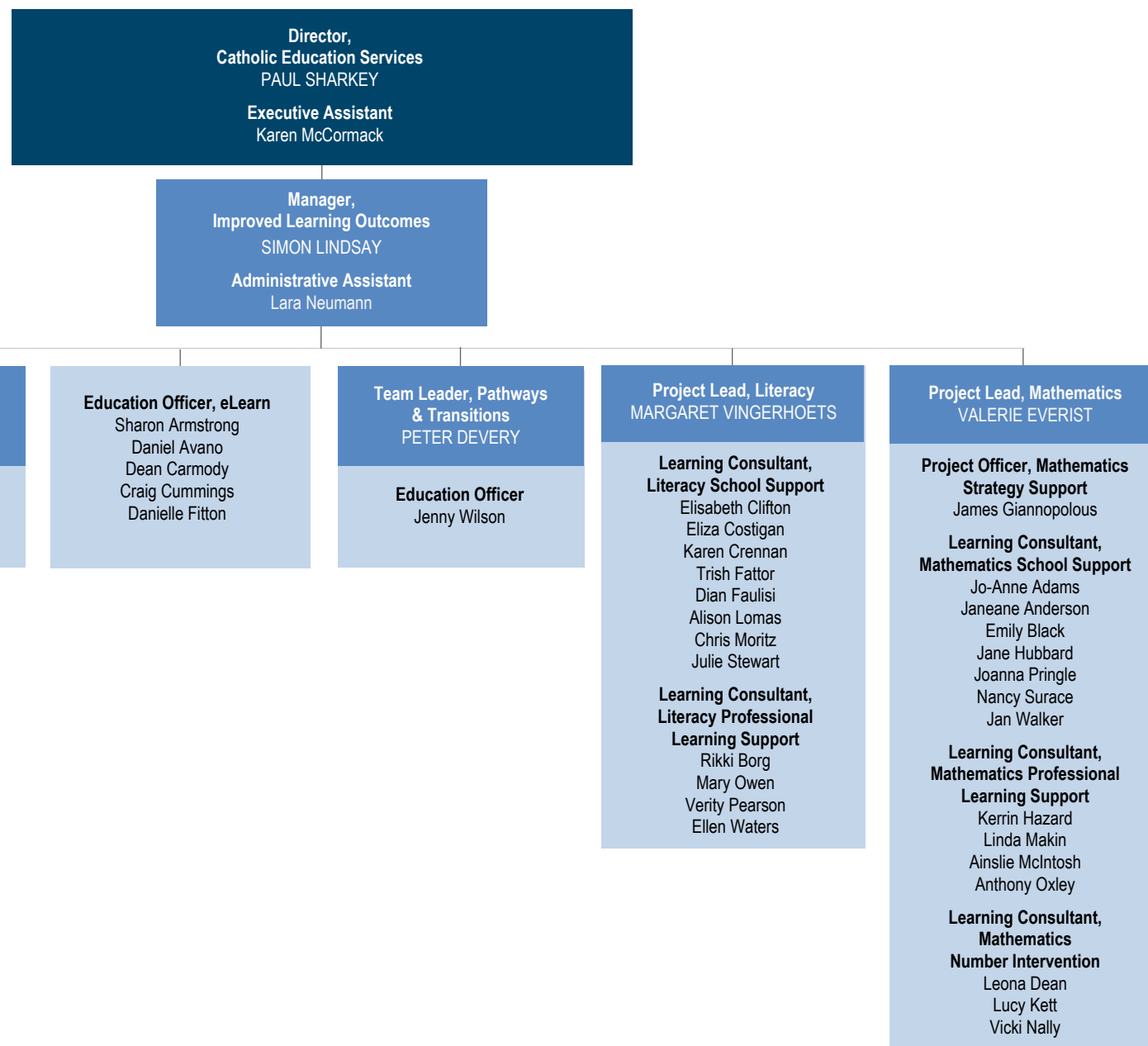
Note: Learning Consultant locations are detailed at the end of this document.

# CATHOLIC EDUCATION SERVICES – LEADERSHIP & SCHOOL DEVELOPMENT



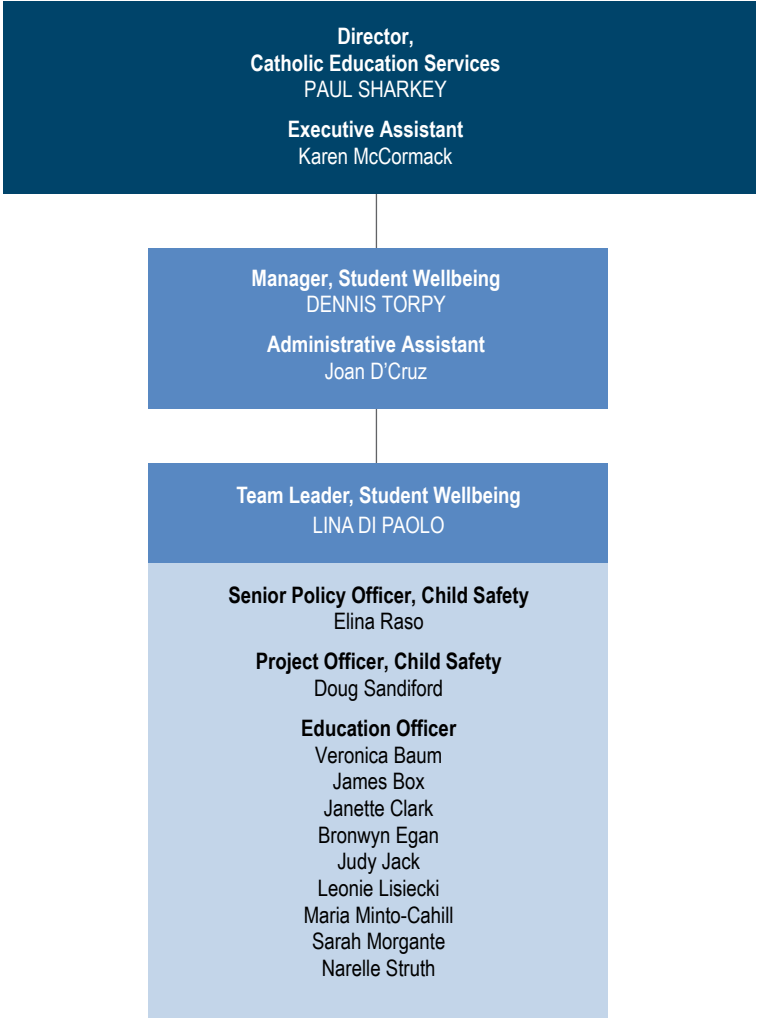


# CATHOLIC EDUCATION SERVICES – IMPROVED LEARNING OUTCOMES



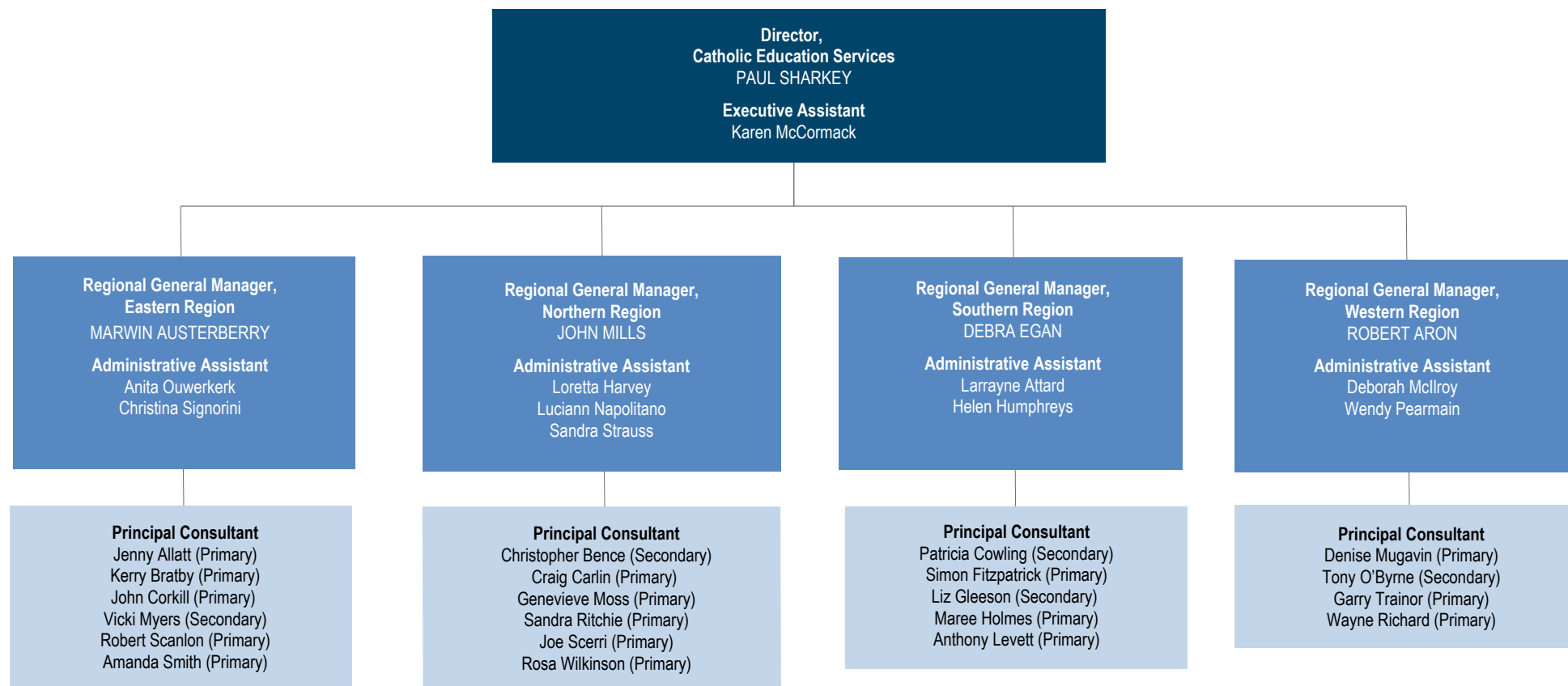
Note: Learning Consultant, Psychologist, Tutor, Speech Pathologist and Visiting Teacher locations are detailed at the end of this document.

# CATHOLIC EDUCATION SERVICES – STUDENT WELLBEING

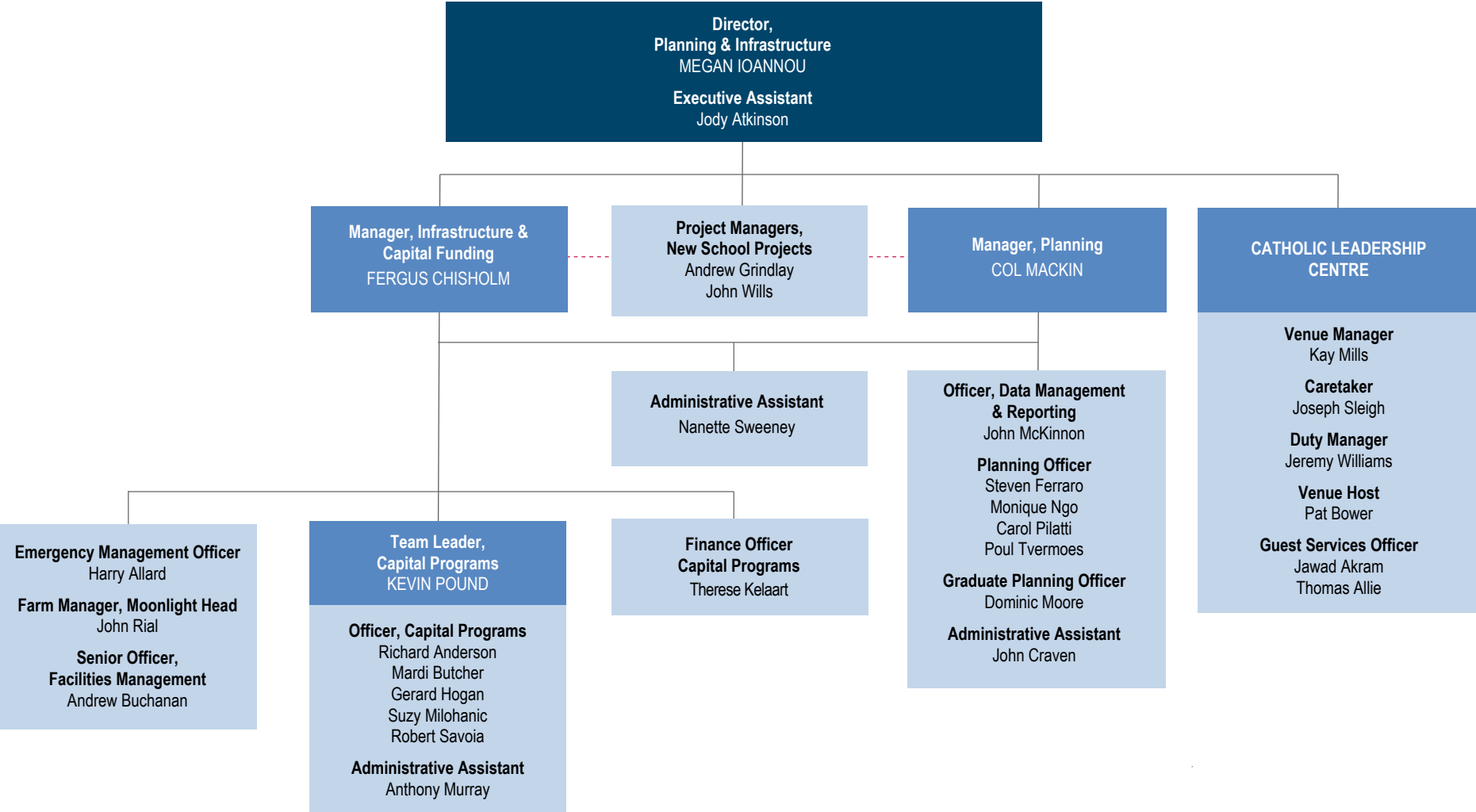


**Note: Education Officer locations** are detailed at the end of this document.

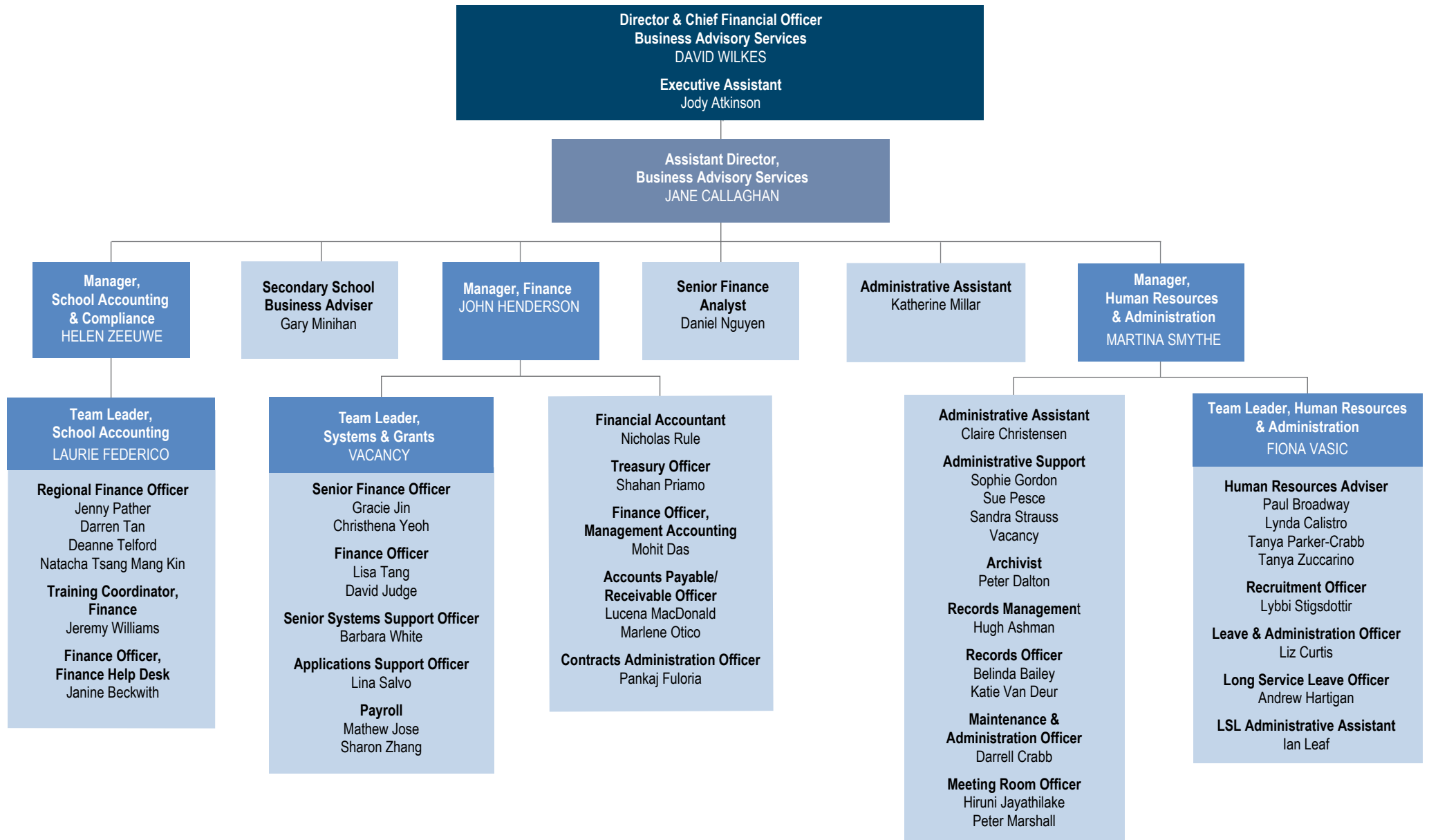
# CATHOLIC EDUCATION SERVICES – REGIONAL OFFICES



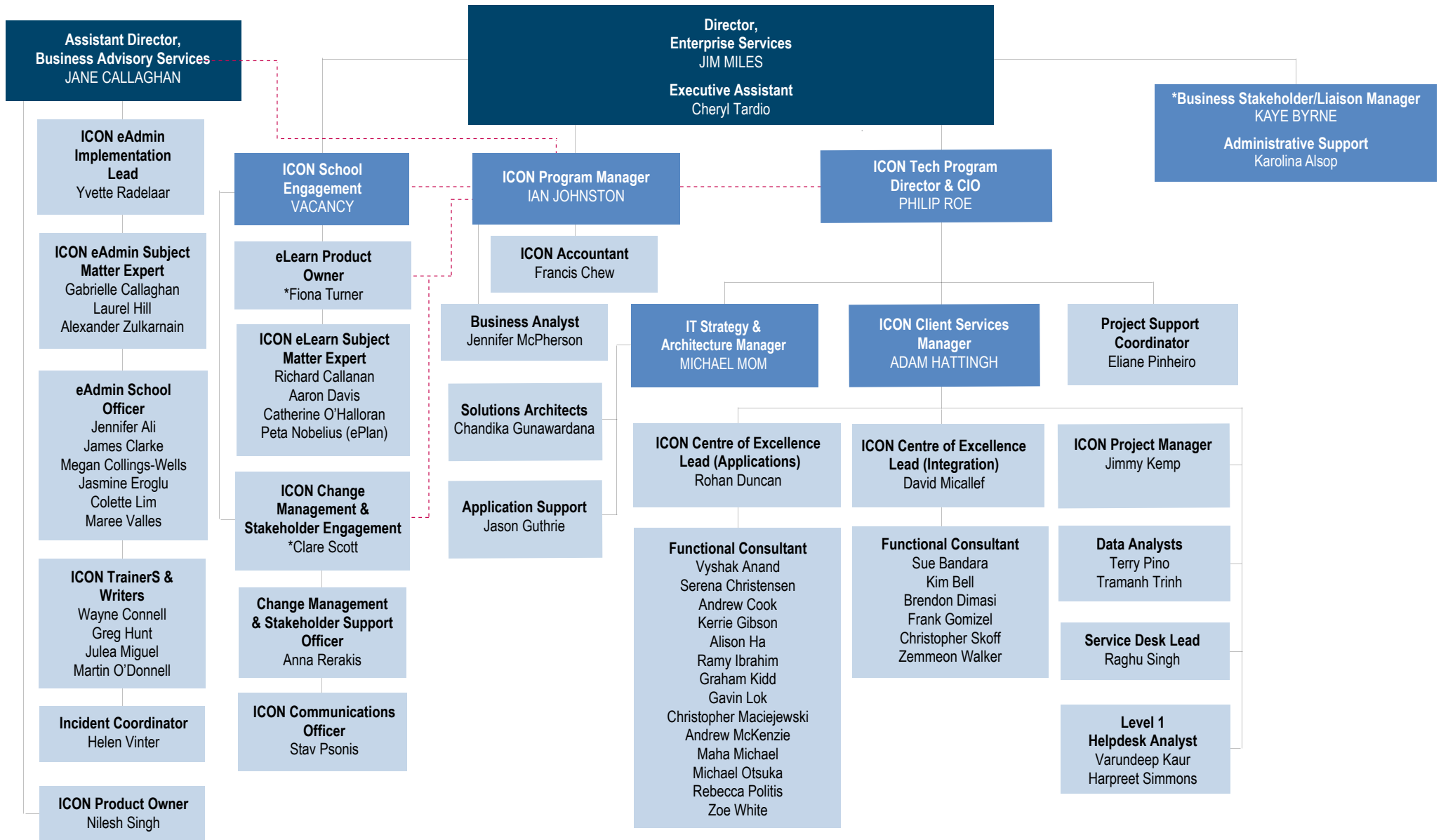
# PLANNING & INFRASTRUCTURE



# BUSINESS ADVISORY SERVICES

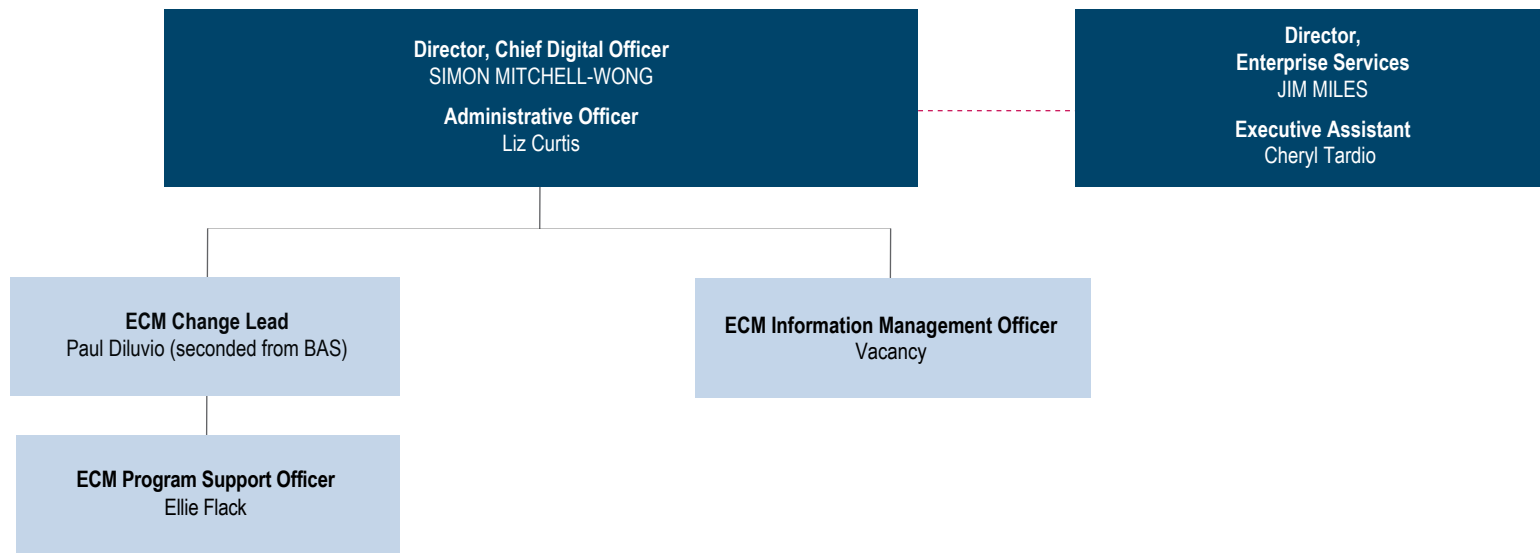


# ENTERPRISE SERVICES – ICON

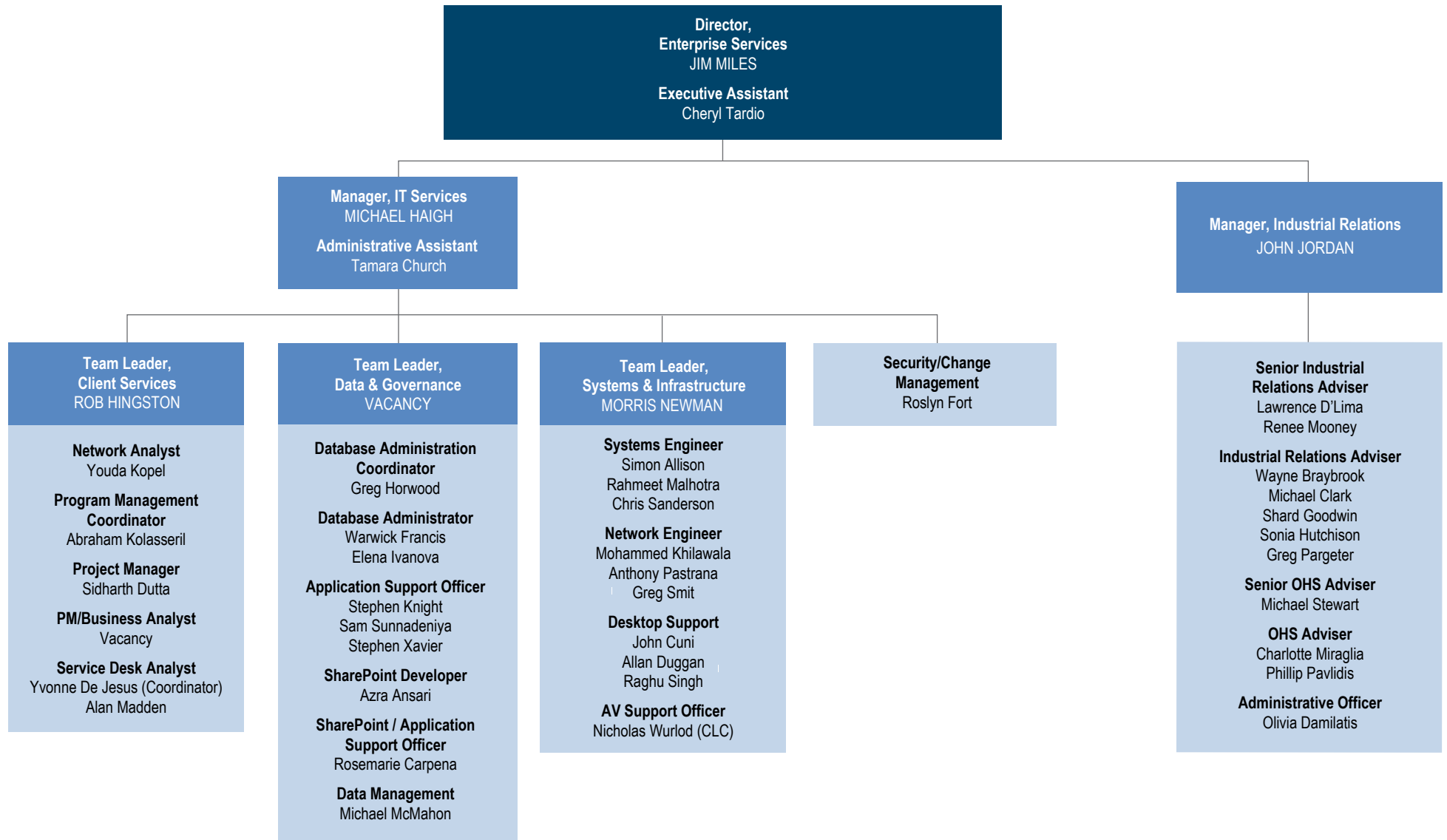


\* Acting Home Manager

# ENTERPRISE SERVICES – ENTERPRISE CONTENT MANAGEMENT (ECM)

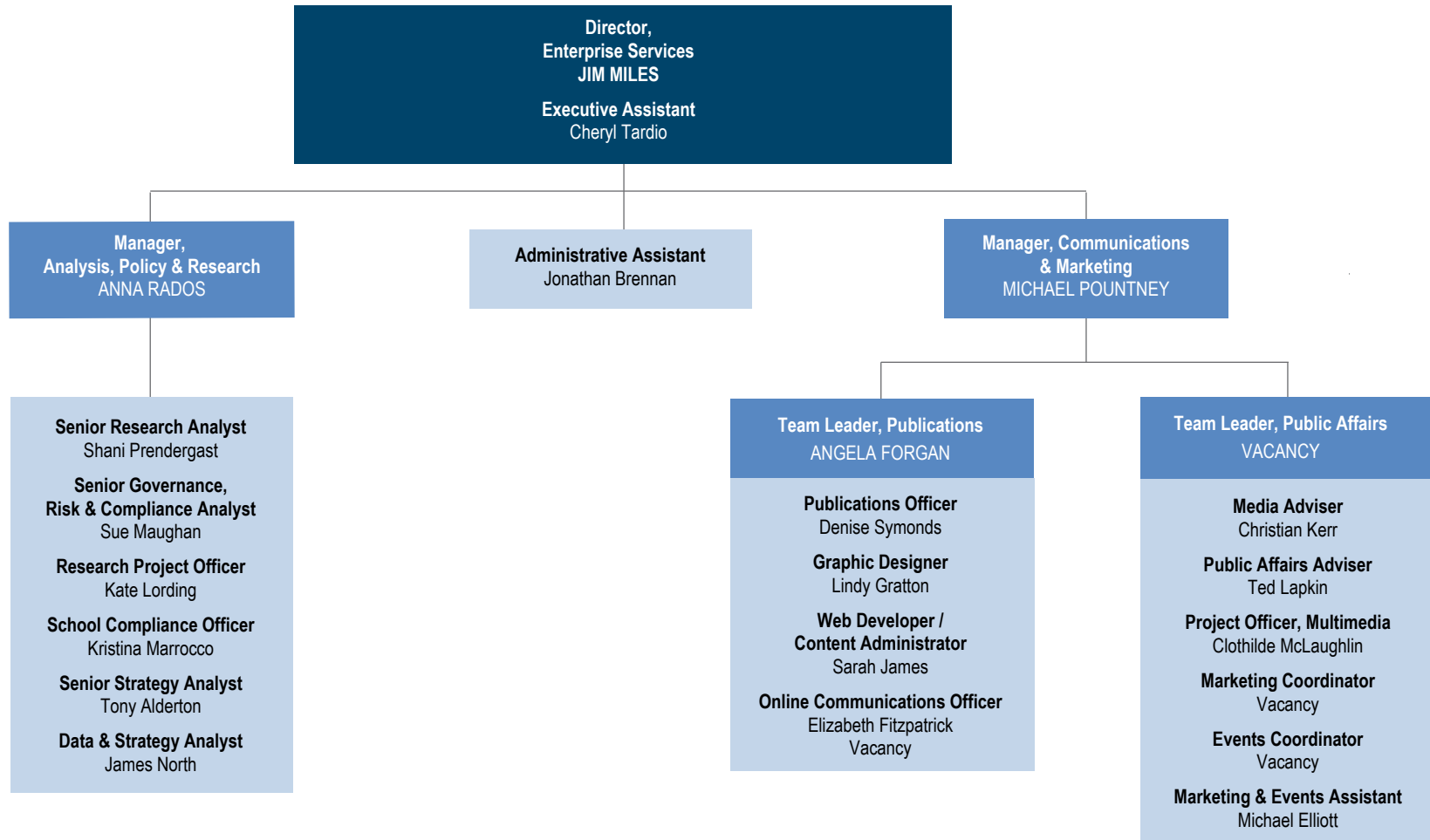


# ENTERPRISE SERVICES – IT SERVICES & INDUSTRIAL RELATIONS





# ENTERPRISE SERVICES – POLICY, RESEARCH & COMMUNICATIONS



# CATHOLIC EDUCATION SERVICES – REGIONAL OFFICES

**Catholic Education Services**  
PAUL SHARKEY  
**Executive Assistant**  
Karen McCormack

**Regional General Manager, Eastern Region**  
MARWIN AUSTERBERRY  
**Administrative Assistant**  
Anita Ouwerkerk, Christina Signorini

**Principal Consultant**  
Jenny Allatt (Primary), Kerry Bratby (Primary),  
John Corkill (Primary), Vicki Myers (Secondary),  
Robert Scanlon (Primary), Amanda Smith (Primary)

**Learning Consultants**  
**Additional Learning Support:** Enza Bunetta  
**Autism / Behaviour:** Monica Morton  
**Chronic Health / Physical Disability:** Maria Vetro  
**General:** Carol Grinsted, Karilyn Gumley  
**Literacy School Support:** Karen Crennan,  
Julie Stewart  
**Literacy Professional Learning Support:** Mary Owen  
**Maths School Support:** Jo-Anne Adams, Emily Black  
**Maths Professional Learning Support:** Anthony Oxley  
**Religious Education:** Louise Harris, Shaun Healy,  
Lisa Heffernan, Kathryn Robinson  
**Education Officer, eLearn:** Daniel Avano  
**Regional Education Officer:** Veronica Baum,  
Janette Clark

**Psychologist:** Elaine Carr, Samantha Hutton,  
Laura Uebergang  
**Speech Pathologist:** Laura Brough,  
Meaghan Dickinson, Stephanie Fornaro,  
Rebekah Hobson, Grace Park, Erin Waters  
**Visiting Teacher:** Glennyce Kelly, Jo Kennedy

**Regional General Manager, Northern Region**  
JOHN MILLS  
**Administrative Assistant**  
Loretta Harvey, Luciann Napolitano, Sandra Strauss

**Principal Consultant**  
Christopher Bence (Secondary), Craig Carlin (Primary),  
Genevieve Moss (Primary), Sandra Ritchie, (Primary),  
Joe Scerri (Primary), Rosa Wilkinson (Primary)

**Learning Consultants**  
**Additional Learning Needs:** Fiona Hannagan,  
Marina Juka, Andrea McKay  
**Autism / Behaviour:** Susan Ongarato  
**Chronic Health / Physical Disability:** Maria Vetro  
**General:** Andrew Callea, Snjezana Singh  
**Literacy Professional Learning Support:** Ellen Waters  
**Literacy School Support:** Dian Faulisi, Chris Moritz  
**Maths Professional Learning Support:** Linda Makin  
**Maths School Support:** Janeane Anderson, Jane Hubbard  
**Maths Number Intervention:** Lucy Kett  
**New Arrivals:** Jane Banks  
**Religious Education:** Pauline Cicutto, Alexandra Cometti,  
Matthew Navaretti, Bernadette Venables  
**Education Officer, eLearn:** Dean Carmody  
**Project Officer, Science & Sustainability:** Shelley Waldon  
**Regional Education Officer:** Judy Jack, Maria Minto-Cahill

**Psychologist:** Yasmine Carey, Silvana Colussa,  
Felicity Ebdon, Arrigo Dorissa  
**Speech Pathologist:** Claire Brough, Stephanie Corso,  
Sarah Jackson, Sarah Jennings,  
Sandi Kotevski, Fiona O'Mahony  
**Visiting Teacher:** Colleen Dalton, Monika Davies,  
Annemarie O'Connell

**Regional General Manager, Southern Region**  
DEBRA EGAN  
**Administrative Assistant**  
Larrayne Attard, Helen Humphreys

**Principal Consultant**  
Patricia Cowling, Simon Fitzpatrick (Primary),  
Liz Gleeson (Secondary), Maree Holmes (Primary),  
Anthony Levett (Primary)

**Learning Consultants**  
**Additional Learning Needs:** Mary-Anne Rugg  
**Autism / Behaviour:** Patrice Wiseman  
**General:** Madeleine Kelly, Andrea Kershaw  
**Literacy School Support:** Eliza Costigan, Alison Lomas  
**Literacy Professional Learning Support:** Verity Pearson  
**Maths Number Intervention:** Vicki Nally  
**Maths Professional Learning Support:** Kerrin Hazard  
**Maths School Support:** Joanna Pringle, Jan Walker  
**Religious Education:** Ingrid Green, Shaun Healy,  
Margaret Waldeck  
**Education Officer, eLearn:** Sharon Armstrong,  
Danielle Fitton  
**Regional Education Officer:** James Box, Leonie Lisiecki

**Psychologist:** Tony MacDonald, Christine Will  
**Speech Pathologist:** Joanne Gimmas, Sarah Gravina,  
Jack McCormack, Maeve McSwiney, Aine Murphy  
**Visiting Teacher:** Helen Blackledge, Odette Budge,  
Ann Fairless, Jan Ferguson, Jon Mason

**Regional General Manager, Western Region**  
ROBERT ARON  
**Administrative Assistant**  
Deborah McLlroy, Wendy Pearmain

**Principal Consultant**  
Denise Mugavin (Primary), Tony O'Byrne (Secondary),  
Wayne Richard (Primary), Garry Trainor (Primary)

**Learning Consultants**  
**Additional Learning Needs:** Anne Thomas  
**Autism / Behaviour:** Kevin Hanasyk  
**General:** Jane Baseggio  
**Literacy Professional Learning Support:** Rikki Borg  
**Literacy School Support:** Elisabeth Clifton,  
Trish Fattor  
**Maths Number Intervention:** Leona Dean  
**Maths Professional Learning Support:** Ainslie McIntosh  
**Maths School Support:** Nancy Surace  
**New Arrivals:** Rebecca Paic  
**Religious Education:** Alexandra Cometti,  
Rosa Grabovac, Rose Thomas  
**Education Officer, eLearn:** Craig Cummings  
**Regional Education Officer:** Sarah Morgante

**Psychologist:** Fionella Binnion, Jelena Kilibarda,  
Emmie Taylor  
**Speech Pathologist:** Brent Connolly, Melanie Fitzsimmons,  
Margaret Sacco, Alice Wright, Bahar Yildirim  
**Visiting Teacher:** Frances Borg,  
Maree Shandley, Lisa Zarb